

testo 560i  
0564 1560



testo 560i



testo Smart Valve



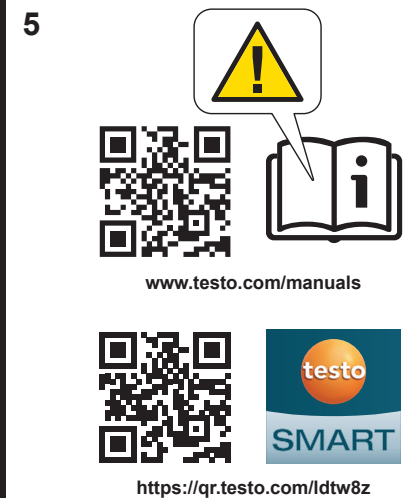
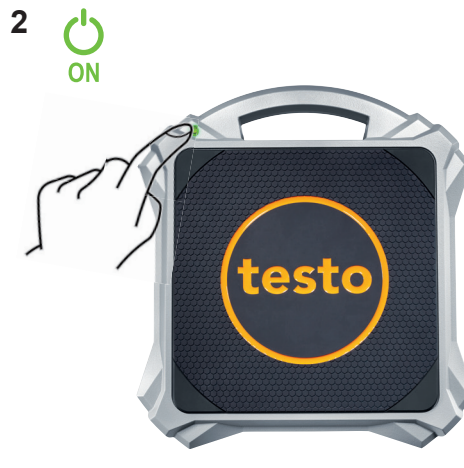
testo Smart App



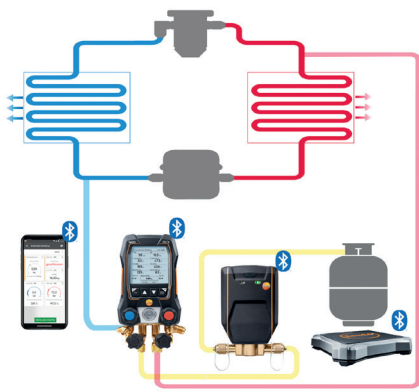
testo 557s



testo 550s



310 x 287 x 58 mm 12.2 x 11.3 x 2.28 in	-10 ... +50 °C +14 ... +122 °F	4x AA alkaline battery	With batteries, with bag: 4,36 kg 153.79 oz With batteries, without bag: 3,41 kg 120.28 oz	IP44	0 ... 100 kg 0 ... 3527.4 oz
	 -10 ... +50 °C +14 ... +122 °F 				



testo 557 s/550s/550i  
+ testo 557/550  
testo  
Smart Valve  
testo 560i



## Approvals and Certification

Product 产品名称	testo 560i
Mat.-No. / 型号	0564 1560
Date / 日期	07.11.2023

**i** The use of the wireless module is subject to the regulations and stipulations of the respective country of use, and the module may only be used in countries for which a country certification has been granted. The user and every owner has the obligation to adhere to these regulations and prerequisites for use, and acknowledges that the re-sale, export, import etc. in particular in countries without wireless permits, is his responsibility.

Country	Comments
Australia	E 1561
Canada	Product IC ID: 6127B-05641560 See IC Warnings
China	CMIIT ID: 2022DJ11266
Europa + EFTA	 <b>i</b> Hereby, Testo SE & Co. KGaA declares that the radio equipment type testo 560i (0564 1560) is in compliance with Directive 2014/53/EU. The full text of the EU declaration of conformity is available at the following internet address: <a href="http://www.testo.com/eu-conformity">www.testo.com/eu-conformity</a> <b>EU countries:</b> Belgium (BE), Bulgaria (BG), Denmark (DK), Germany (DE), Estonia (EE), Finland (FI), France (FR), Greece (GR), Ireland (IE), Italy (IT), Latvia (LV), Lithuania (LT), Luxembourg (LU), Malta (MT), Netherlands (NL), Austria (AT), Poland (PL), Portugal (PT), Romania (RO), Sweden (SE), Slovakia (SK), Slovenia (SI), Spain (ES), Czech Republic (CZ), Hungary (HU), Republic of Cyprus (CY). <b>EFTA countries:</b> Iceland, Liechtenstein, Norway, Switzerland  WEEE Reg. no. DE 75334352
Japan	Contains Lierda S37 BLE module 201-210972 See Japan Information
South Korea	R-R-te2-05641560 See KCC Warning
Türkiye	Authorized
United Kingdom (UK)	 <b>i</b> The UK Declaration of Conformity can be found on the testo homepage <a href="http://www.testo.com">www.testo.com</a> under the product specific downloads.

USA	WAF-05641560 See FCC Warnings
-----	----------------------------------

Bluetooth® Information / 蓝牙信息	Feature 特征与参数	Values 数值
	Bluetooth® range / 范围	up to 30 m / 98.4 ft / 30无障碍场地)
	Radio Type / 型号	Bluetooth® Low Energy (BLE) 4.2
	Bluetooth® company / 制造商	Lierda Science & Technology Co., Ltd Lierda LSD4BT-S37
	RF Band / 射频频段	2402 – 2480 MHz
	Power output [E.I.R.P.] / 输出功率	≤10 dBm
Bluetooth® SIG Listing	Declaration ID	D059666
	Member company	Testo SE & Co. KGaA

## IC Warnings

### CAN ICES-003(B) / NMB-003(B)

This Class B digital apparatus complies with Canadian ICES-003. Cet appareil numérique de la classe B est conforme à la norme NMB-003 du Canada.

### RSS-Gen & RSS-247 statement

This device contains licence-exempt transmitter(s)/receiver(s) that comply with Innovation, Science and Economic Development Canada's licence-exempt RSS(s).

Operation is subject to the following two conditions:

- (1) this device may not cause interference, and
- (2) this device must accept any interference, including interference that may cause undesired operation of the device.

L'émetteur/récepteur exempt de licence contenu dans le présent appareil est conforme aux CNR d'Innovation, Sciences et Développement économique Canada applicables aux appareils radio exempts de licence. L'exploitation est autorisée aux deux conditions suivantes:

- (1) L'appareil ne doit pas produire de brouillage
- (2) l'appareil doit accepter tout brouillage radioélectrique subi, même si le brouillage est susceptible d'en compromettre le fonctionnement.

### Caution: Radio Frequency Radiation Exposure

This equipment complies with radio frequency exposure limits set forth by the Innovation, Science and Economic Development Canada for an uncontrolled environment.

This equipment should be installed and operated with a minimum distance of 20 cm between the device and the user or bystanders.

### Co-Location

This device must not be co-located or operated in conjunction with any other antenna or transmitter.

### Attention : exposition au rayonnement de radiofréquences

Cet équipement est conforme aux limites d'exposition aux radiofréquences définies par la Innovation, Sciences et Développement économique Canada pour un environnement non contrôlé.

Cet équipement doit être installé et utilisé avec un minimum de 20 cm de distance entre le dispositif et l'utilisateur ou des tiers.

### Co-location

Ce dispositif ne doit pas être utilisé à proximité d'une autre antenne ou d'un autre émetteur.

## FCC Warnings

Information from the FCC (Federal Communications Commission)

### For your own safety

Shielded cables should be used for a composite interface. This is to ensure continued protection against radio frequency interference.

### FCC warning statement

This equipment has been tested and found to comply with the limits for a Class B digital device, pursuant to Part 15 of the FCC Rules. These limits are designed to provide reasonable protection against harmful interference in a residential installation. This equipment generates, uses and can radiate radio frequency energy and, if not installed and used in accordance with the instructions, may cause harmful interference to radio communications. However, there is no guarantee that interference will not occur in a particular installation. If this equipment does cause harmful interference to radio or television reception, which can be determined by turning the equipment off and on, the user is encouraged to try to correct the interference by one or more of the following measures:

- Reorient or relocate the receiving antenna.
- Increase the separation between the equipment and receiver.
- Connect the equipment into an outlet on a circuit different from that to which the receiver is connected.
- Consult the dealer or an experienced radio/TV technician for help.

### Caution

Changes or modifications not expressly approved by the party responsible for compliance could void the user's authority to operate the equipment. Shielded interface cable must be used in order to comply with the emission limits.

### Warning

This device complies with Part 15 of the FCC Rules.

Operation is subject to the following two conditions:

- (1) this device may not cause harmful interference, and
- (2) this device must accept any interference received, including interference that may cause undesired operation.

### Caution: Radio Frequency Radiation Exposure

This equipment complies with radio frequency exposure limits set forth by the FCC for an uncontrolled environment.

### Co-Location

This device must not be co-located or operated in conjunction with any other antenna or transmitter.

## KCC Warning

해당 무선 설비는 운용 중 전파혼신 가능성이 있음.

## Japan Information

当該機器には電波法に基づく、技術基準適合証明等を受けた特定無線設備を装着している。